

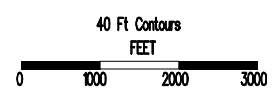
Blodgett Forest Research Station

FIRE-FIRE SURROGATE UNITS

LEGEND

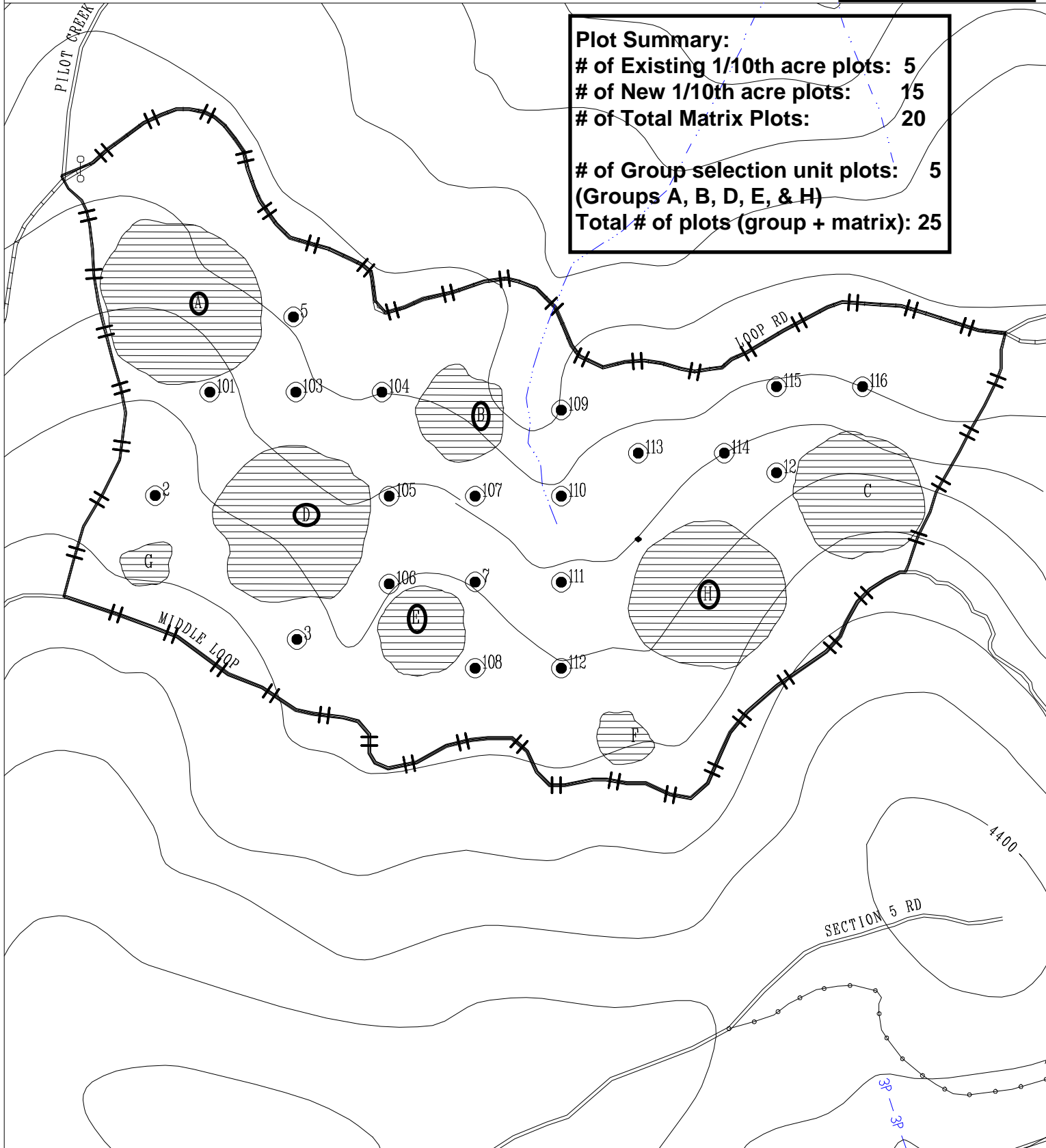
- Control Units
- Fire Only Units
- Mechanical Only Units
- Mechanical and Fire Units
- Group Openings

- Paved Roads
- Class I Streams
- Graveled Roads
- Class II Streams
- Seasonal Roads
- Section/Ownership
- Seasonal Low Use Roads
- Gate



BLODGETT FOREST - COMPARTMENT 40 (Group Selection Research) **CONTROL**

Plot Summary:
 # of Existing 1/10th acre plots: 5
 # of New 1/10th acre plots: 15
 # of Total Matrix Plots: 20
 # of Group selection unit plots: 5
 (Groups A, B, D, E, & H)
 Total # of plots (group + matrix): 25



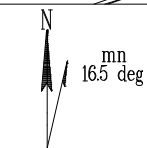
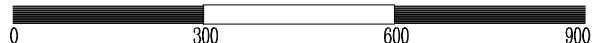
- Roads:**
- Paved Permanent
 - Graveled Permanent
 - Seasonal
 - Seasonal Low Use
 - New Seasonal
 - Compartment Boundary
 - Property Boundary
 - 40 ft Contours

- Watercourses:**
- Class I
 - Class II
 - Class III
 - Class IIIIP (Potential)
 - Class IV
 - 1996 groups

Gate

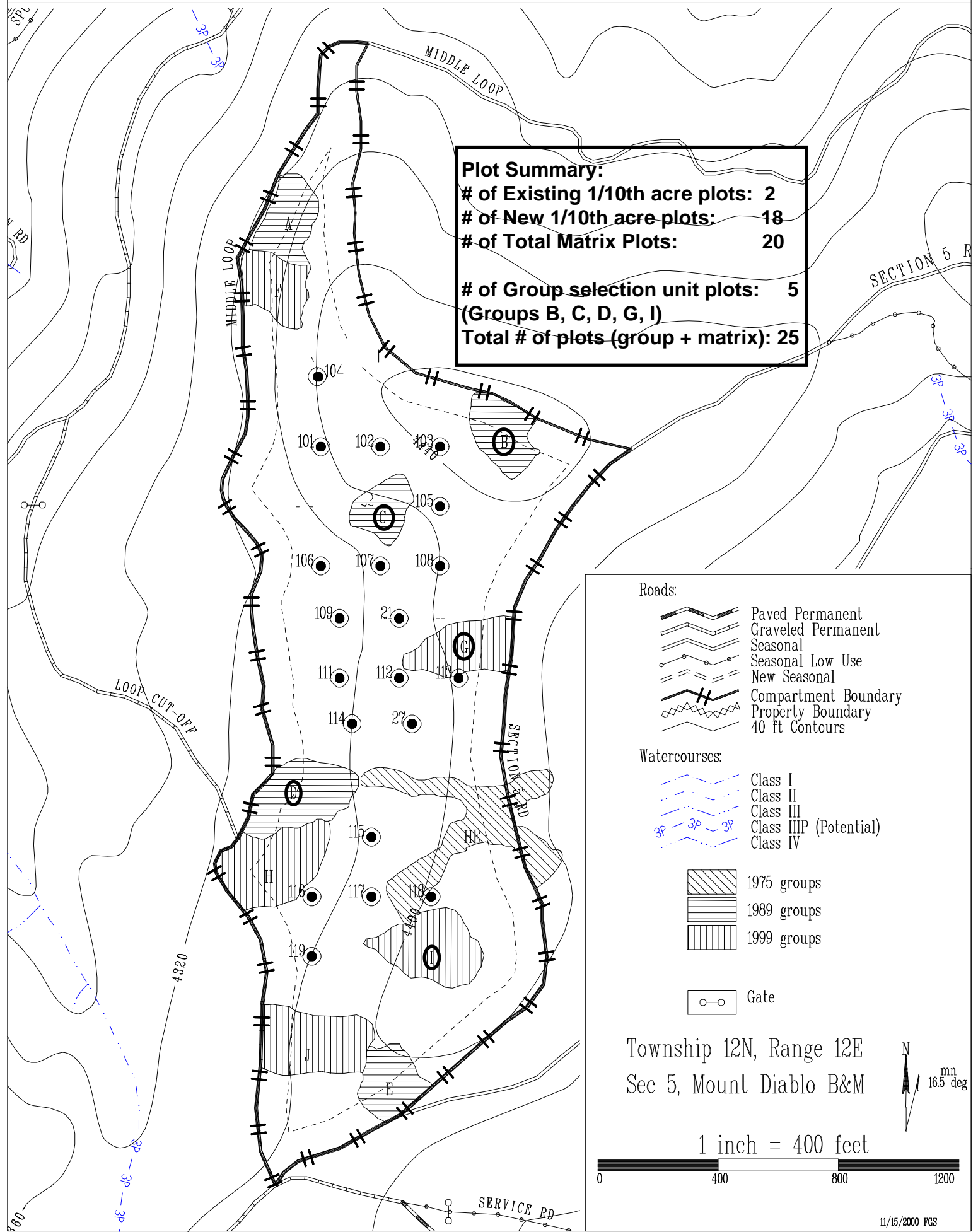
Township 12N, Range 12E
 Sec 7, Mount Diablo B&M

1 inch = 300 feet



Plot Summary:
 # of Existing 1/10th acre plots: 2
 # of New 1/10th acre plots: 18
 # of Total Matrix Plots: 20

 # of Group selection unit plots: 5
 (Groups B, C, D, G, I)
 Total # of plots (group + matrix): 25



- Roads:**
- Paved Permanent
 - Graveled Permanent
 - Seasonal
 - Seasonal Low Use
 - New Seasonal
 - Compartment Boundary
 - Property Boundary
 - 40 ft Contours

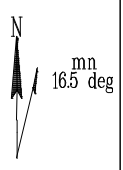
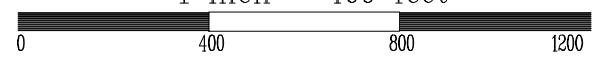
- Watercourses:**
- Class I
 - Class II
 - Class III
 - Class III P (Potential)
 - Class IV

- 1975 groups
- 1989 groups
- 1999 groups

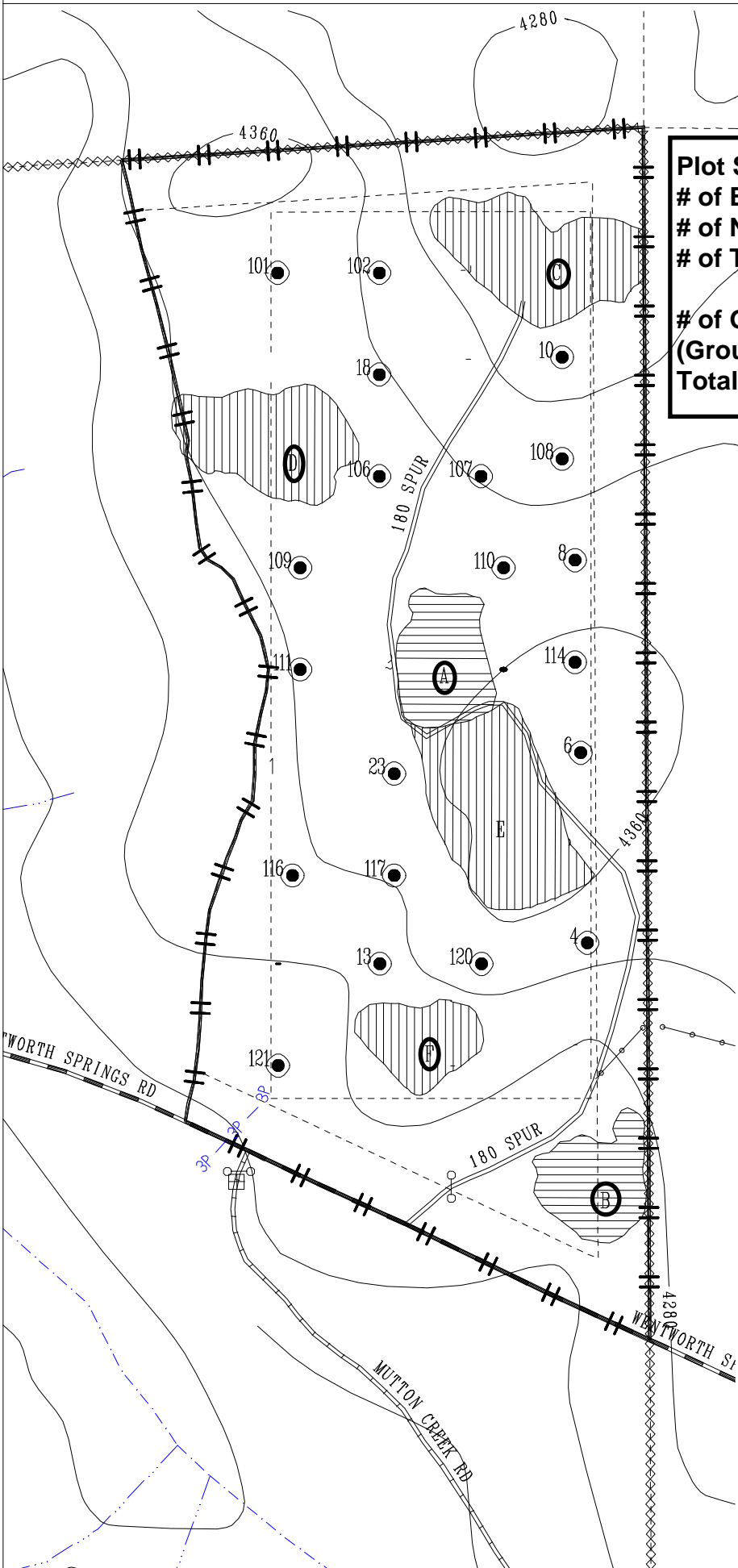
- Gate

Township 12N, Range 12E
 Sec 5, Mount Diablo B&M

1 inch = 400 feet



Plot Summary:
 # of Existing 1/10th acre plots: 7
 # of New 1/10th acre plots: 13
 # of Total Matrix Plots: 20
 # of Group selection unit plots: 5
 (Groups A, B, C, D, F)
 Total # of plots (group + matrix): 25



Roads:

- Paved Permanent
- Graveled Permanent
- Seasonal
- Seasonal Low Use
- New Seasonal
- Compartment Boundary
- Property Boundary
- 40 ft Contours

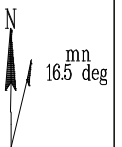
Watercourses:

- Class I
- Class II
- Class III
- Class III P (Potential)
- Class IV

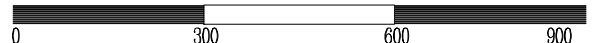
- 1986 groups
- 1996 groups

- Gate

Township 12N, Range 12E
 Sec 9, Mount Diablo B&M



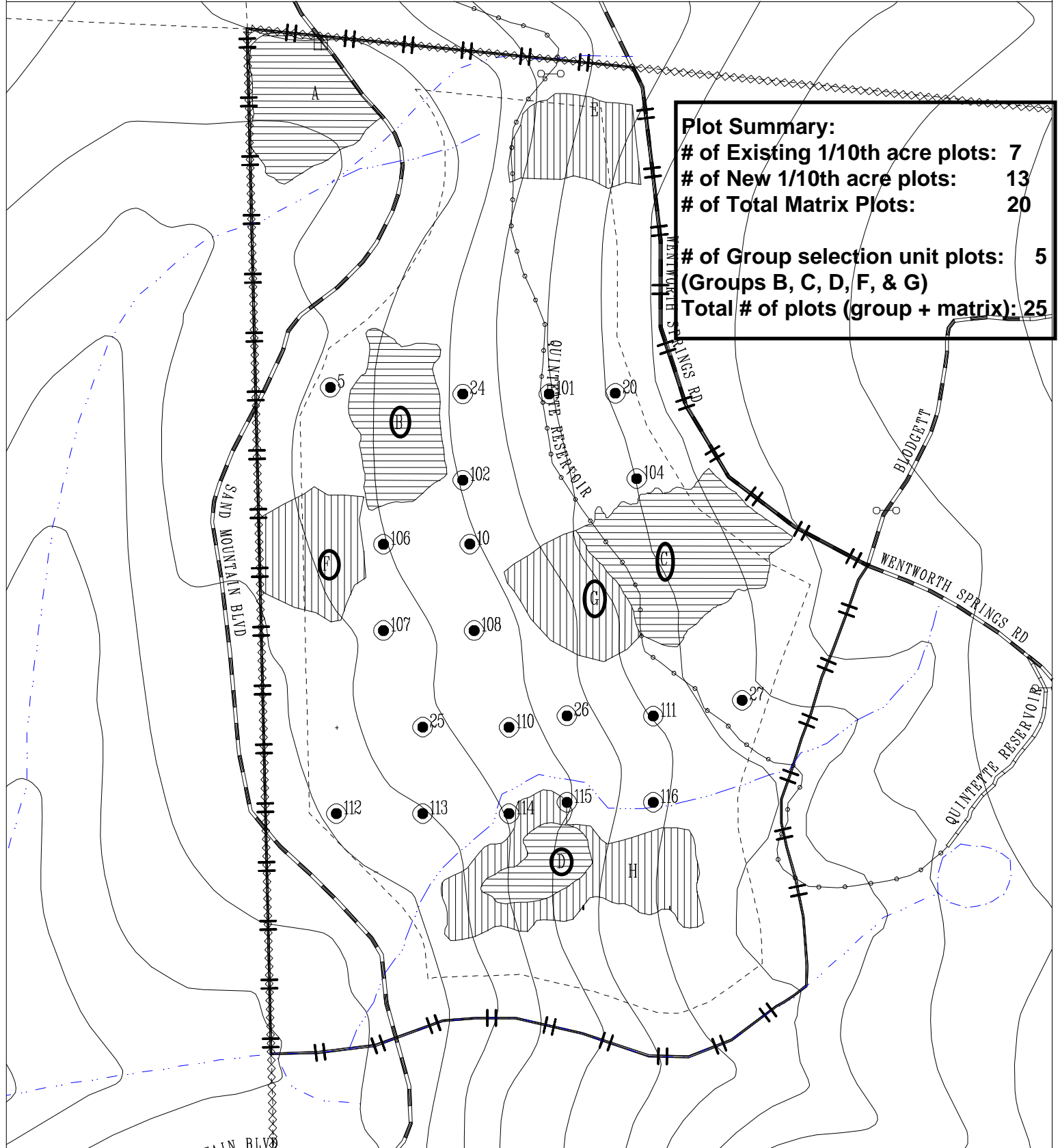
1 inch = 300 feet



BLODGETT FOREST - COMPARTMENT 190 U (Group Selection)

MECH ONLY

Plot Summary:
 # of Existing 1/10th acre plots: 7
 # of New 1/10th acre plots: 13
 # of Total Matrix Plots: 20
 # of Group selection unit plots: 5
 (Groups B, C, D, F, & G)
 Total # of plots (group + matrix): 25



- Roads:**
- Paved Permanent
 - Graveled Permanent
 - Seasonal
 - Seasonal Low Use
 - New Seasonal
 - Compartment Boundary
 - Property Boundary
 - 40 ft Contours

- Watercourses:**
- Class I
 - Class II
 - Class III
 - Class IIIIP (Potential)
 - Class IV
 - 1989 groups
 - 1999 groups

Gate

Township 12N, Range 12E
 Sec 7, Mount Diablo B&M

1 inch = 300 feet

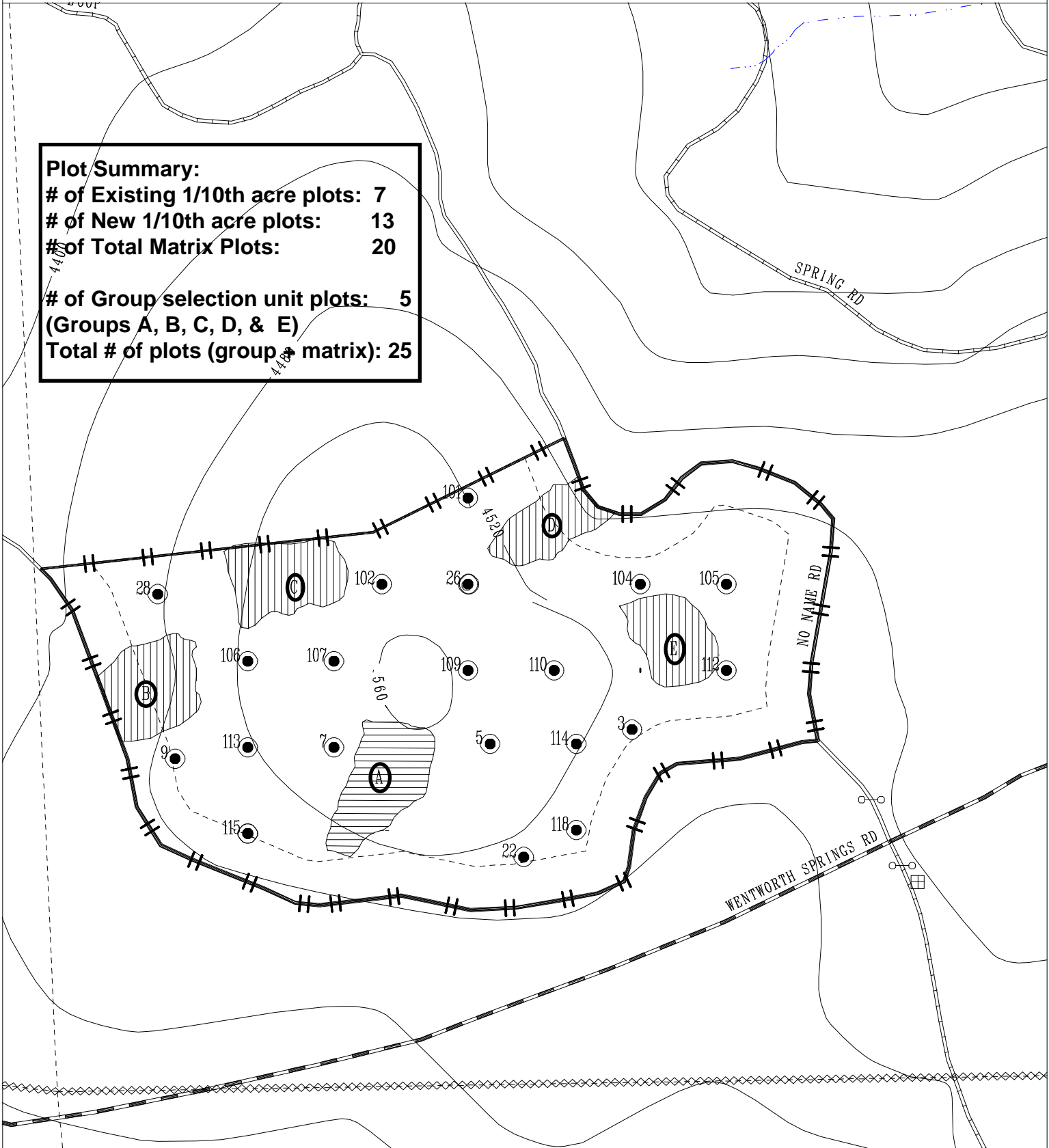


N
 16.5 deg
 6/5/2000 FCS

BLODGETT FOREST - COMPARTMENT 240 U (Group Selection)

CONTROL

Plot Summary:
 # of Existing 1/10th acre plots: 7
 # of New 1/10th acre plots: 13
 # of Total Matrix Plots: 20
 # of Group selection unit plots: 5
 (Groups A, B, C, D, & E)
 Total # of plots (group + matrix): 25



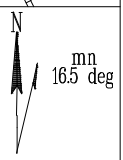
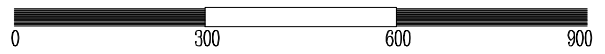
- Roads:**
- Paved Permanent
 - Graveled Permanent
 - Seasonal
 - Seasonal Low Use
 - New Seasonal
 - Compartment Boundary
 - Property Boundary
 - 40 ft Contours

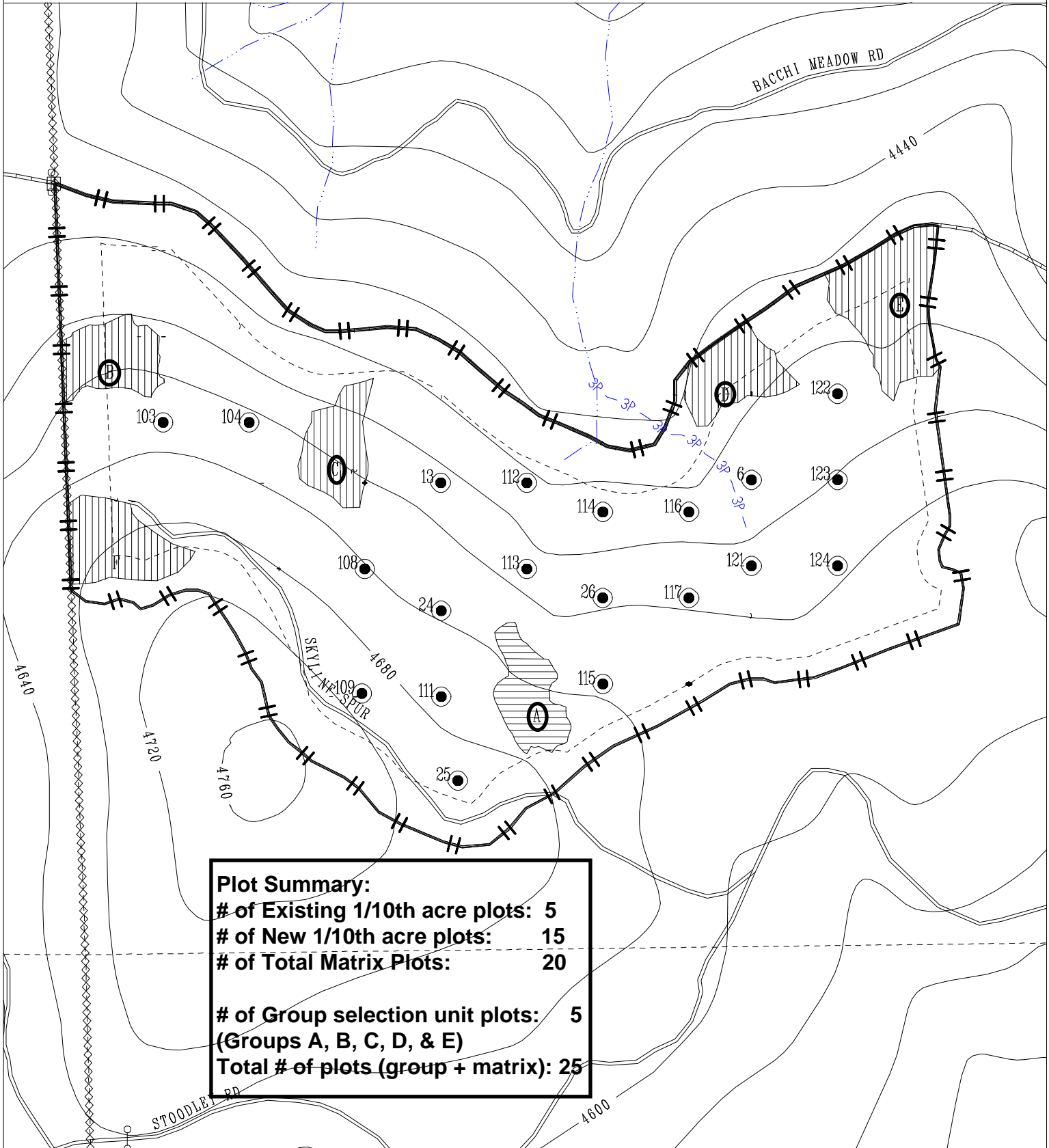
- Watercourses:**
- Class I
 - Class II
 - Class III
 - Class IIIIP (Potential)
 - Class IV
 - 1984 groups
 - 1998 groups

Gate

Township 12N, Range 12E
 Sec 8, Mount Diablo B&M

1 inch = 300 feet





Plot Summary:
of Existing 1/10th acre plots: 5
of New 1/10th acre plots: 15
of Total Matrix Plots: 20

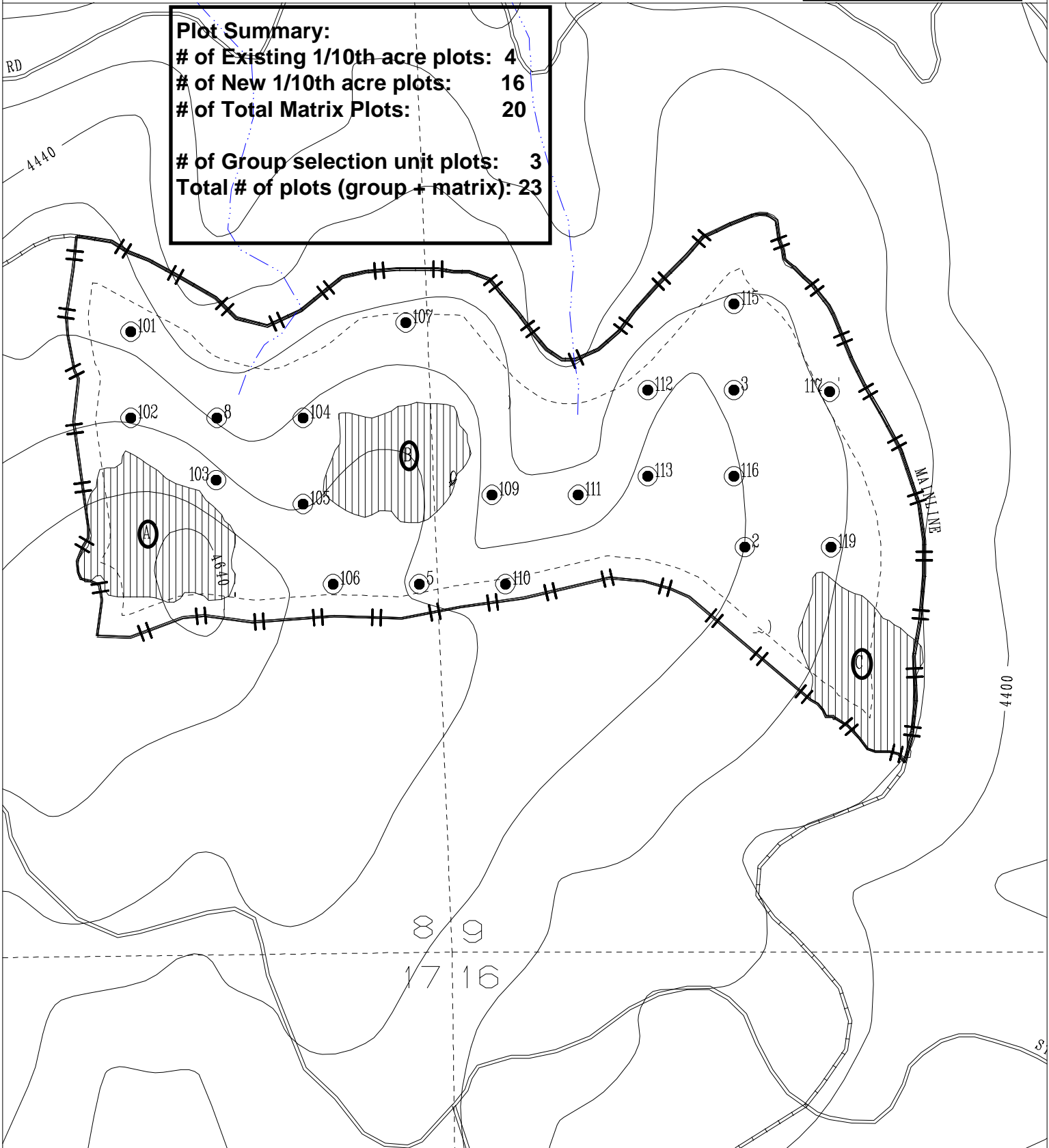
of Group selection unit plots: 5
(Groups A, B, C, D, & E)
Total # of plots (group + matrix): 25

- Roads:**
- Paved Permanent
 - Graveled Permanent
 - Seasonal
 - Seasonal Low Use
 - New Seasonal
 - Compartment Boundary
 - Property Boundary
 - 40 ft Contours

- Watercourses:**
- Class I
 - Class II
 - Class III
 - Class III P (Potential)
 - Class IV
 - 1986 groups
 - 1998 groups
 - Gate

Township 12N, Range 12E, Sec 8,9N
 Mount Diablo Base & Meridian
 1 inch = 300 feet

Plot Summary:
 # of Existing 1/10th-acre plots: 4
 # of New 1/10th acre plots: 16
 # of Total Matrix Plots: 20
 # of Group selection unit plots: 3
 Total # of plots (group + matrix): 23

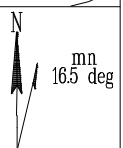


- Roads:**
- Paved Permanent
 - Graveled Permanent
 - Seasonal
 - Seasonal Low Use
 - New Seasonal
 - Compartment Boundary
 - Property Boundary
 - 40 ft Contours

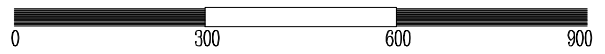
- Watercourses:**
- Class I
 - Class II
 - Class III
 - Class IIIIP (Potential)
 - Class IV
 - 1992 groups

Gate

Township 12N, Range 12E
 Sec 8&9, Mount Diablo B&M



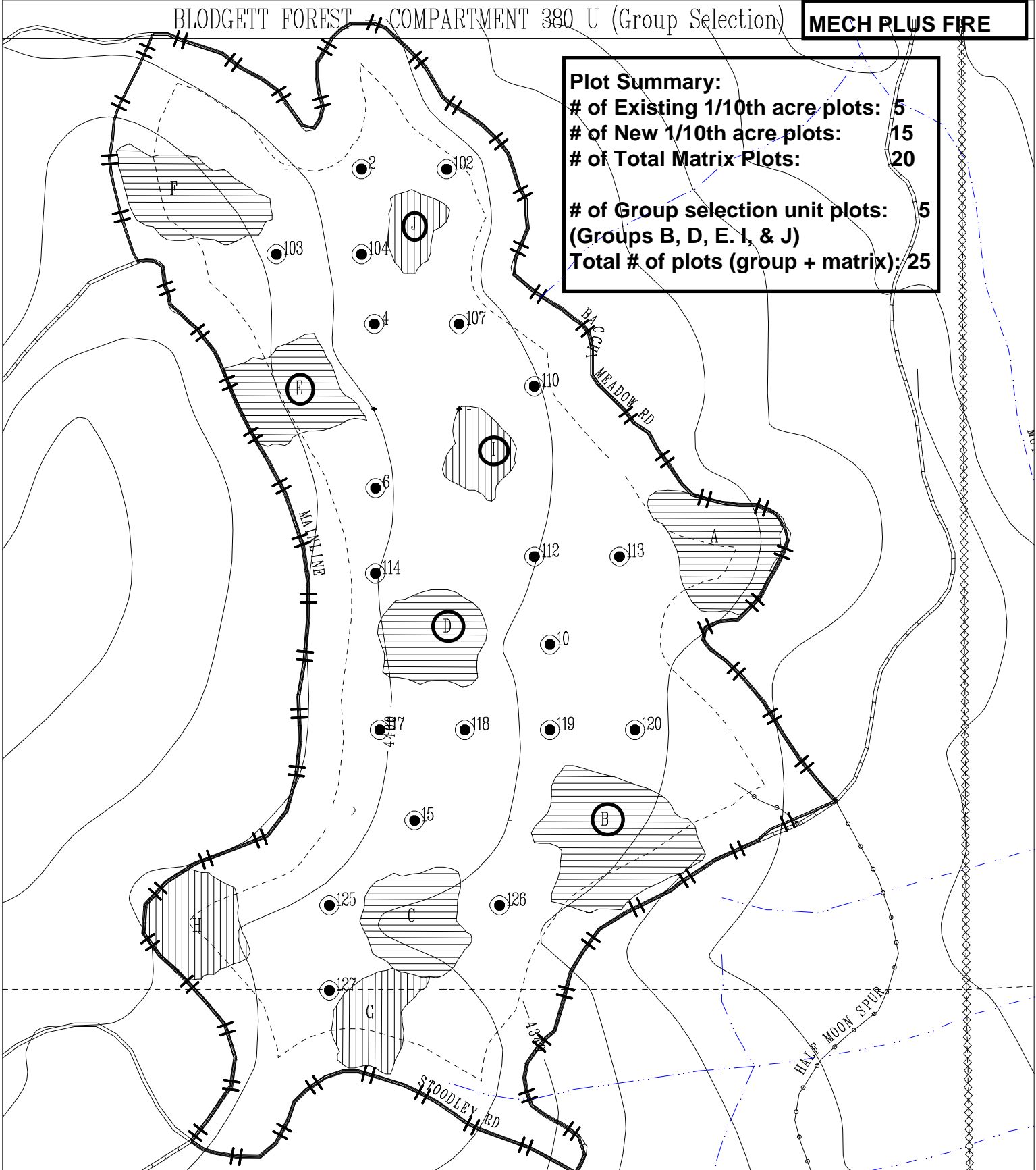
1 inch = 300 feet



BLODGETT FOREST // COMPARTMENT 380 U (Group Selection)

MECH PLUS FIRE

Plot Summary:
 # of Existing 1/10th acre plots: 5
 # of New 1/10th acre plots: 15
 # of Total Matrix Plots: 20
 # of Group selection unit plots: 5
 (Groups B, D, E, I, & J)
 Total # of plots (group + matrix): 25

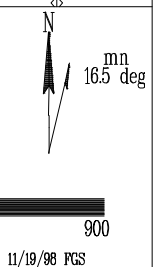
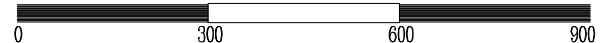


- Roads:**
- Paved Permanent
 - Graveled Permanent
 - Seasonal
 - Seasonal Low Use
 - New Seasonal
 - Compartment Boundary
 - Property Boundary
 - 40 ft Contours

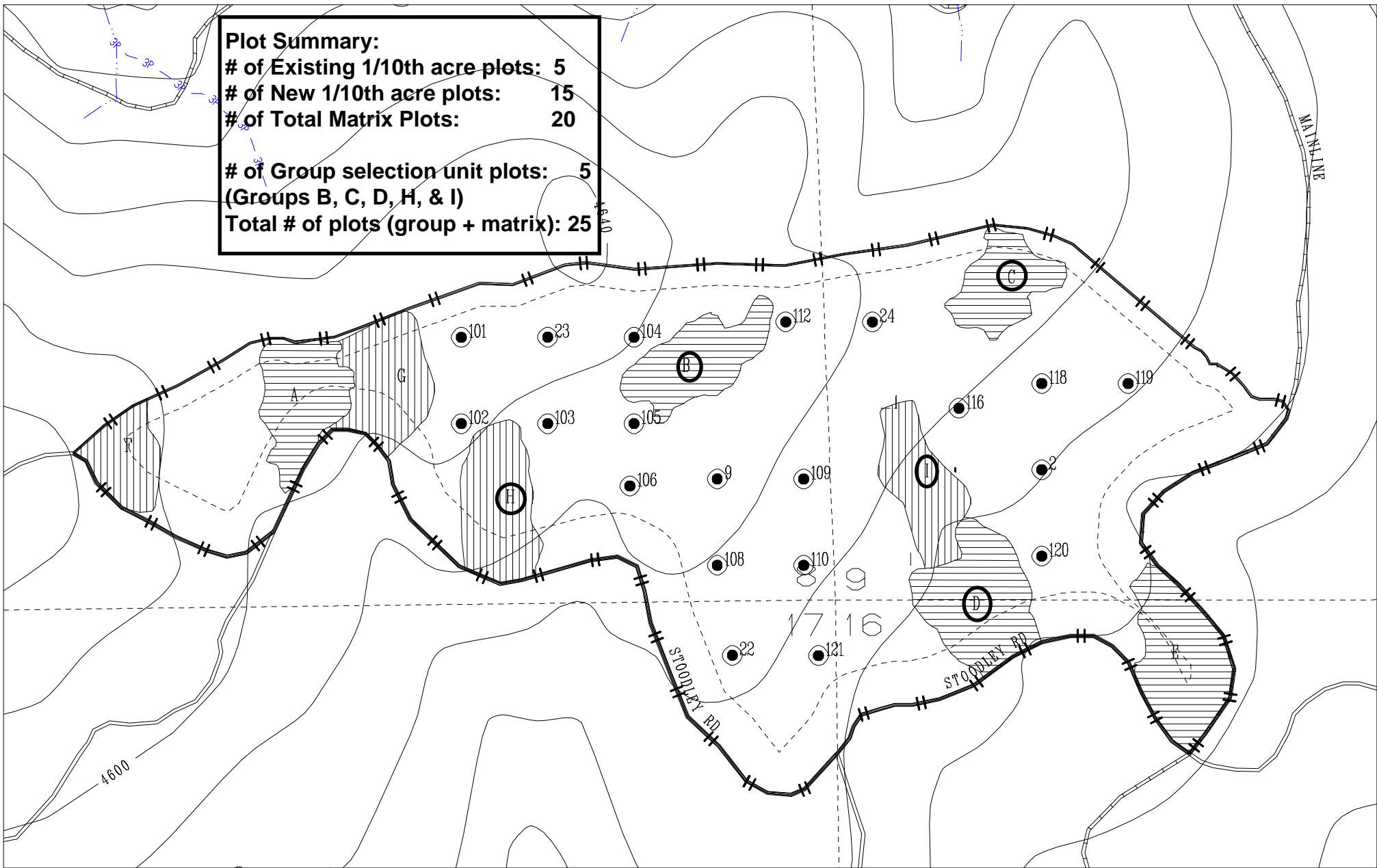
- Watercourses:**
- Class I
 - Class II
 - Class III
 - Class IIIIP (Potential)
 - Class IV
 - 1985 groups
 - 1995 groups
 - Gate

Township 12N, Range 12E
 Sec 21, Mount Diablo B&M

1 inch = 300 feet



Plot Summary:
 # of Existing 1/10th acre plots: 5
 # of New 1/10th acre plots: 15
 # of Total Matrix Plots: 20
 # of Group selection unit plots: 5
 (Groups B, C, D, H, & I)
 Total # of plots (group + matrix): 25



BLODGETT FOREST

COMPARTMENT 400

FIRE ONLY

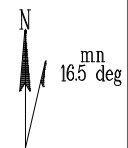
(Group Selection)

- Roads:**
- Paved Permanent
 - Graveled Permanent
 - Seasonal
 - Seasonal Low Use
 - New Seasonal
 - Compartment Boundary
 - Property Boundary
 - 40 ft Contours

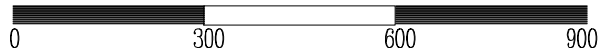
- Watercourses:**
- Class I
 - Class II
 - Class III
 - Class III P (Potential)
 - Class IV
- 1989 groups
- 1999 groups

Gate

Township 12N, Range 12E
 Mount Diablo B&M

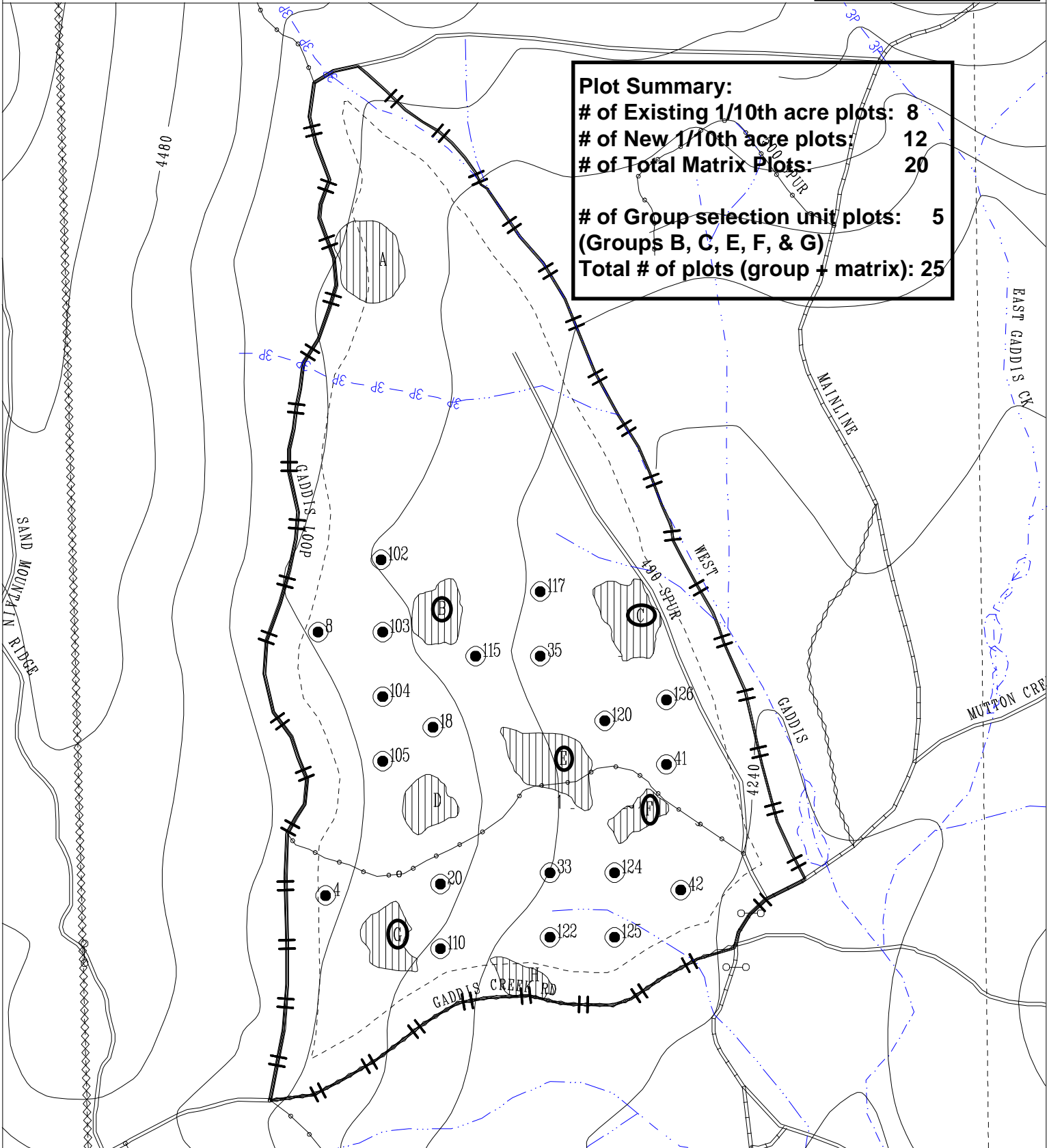


1 inch = 300 feet



Plot Summary:
 # of Existing 1/10th acre plots: 8
 # of New 1/10th acre plots: 12
 # of Total Matrix Plots: 20

of Group selection unit plots: 5
 (Groups B, C, E, F, & G)
 Total # of plots (group + matrix): 25



- | | |
|----------------------|-------------------------|
| Roads: | Watercourses: |
| Paved Permanent | Class I |
| Graveled Permanent | Class II |
| Seasonal | Class III |
| Seasonal Low Use | Class III P (Potential) |
| New Seasonal | Class IV |
| Compartment Boundary | 1992 groups |
| Property Boundary | |
| 40 ft Contours | |

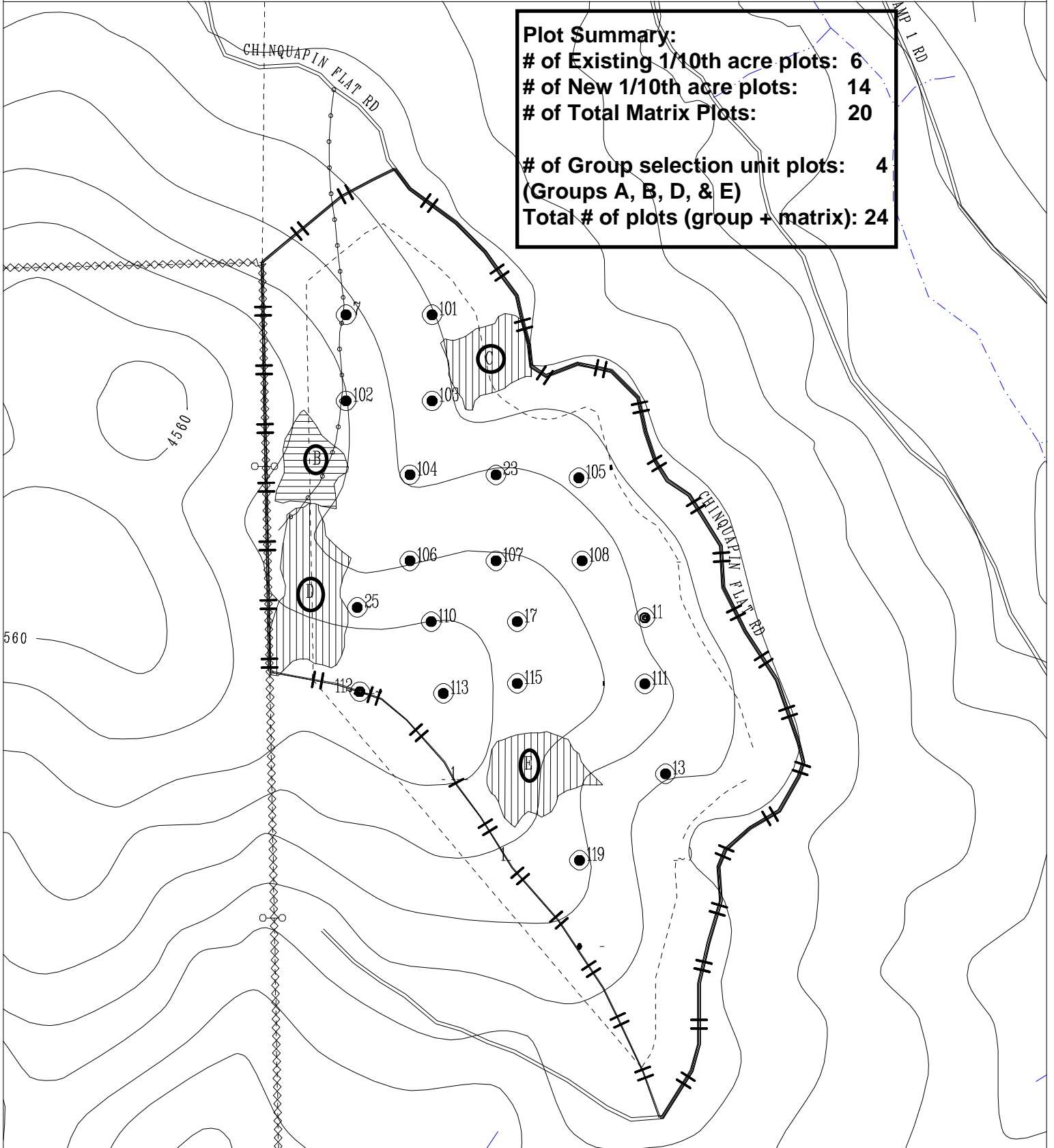
Township 12N, Range 12E, Sec 17 N
 Mount Diablo Base & Meridian
 1 inch = 400 feet

BLODGETT FOREST - COMPARTMENT 570 U (Group Selection)

Plot Summary:

of Existing 1/10th acre plots: 6
 # of New 1/10th acre plots: 14
 # of Total Matrix Plots: 20

of Group selection unit plots: 4
 (Groups A, B, D, & E)
 Total # of plots (group + matrix): 24



Roads:

- Paved Permanent
- Graveled Permanent
- Seasonal
- Seasonal Low Use
- New Seasonal
- Compartment Boundary
- Property Boundary
- 40 ft Contours

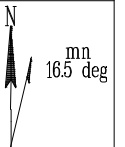
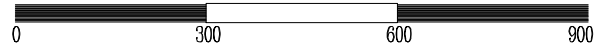
Watercourses:

- Class I
- Class II
- Class III
- Class III P (Potential)
- Class IV
- 1996 groups

Gate

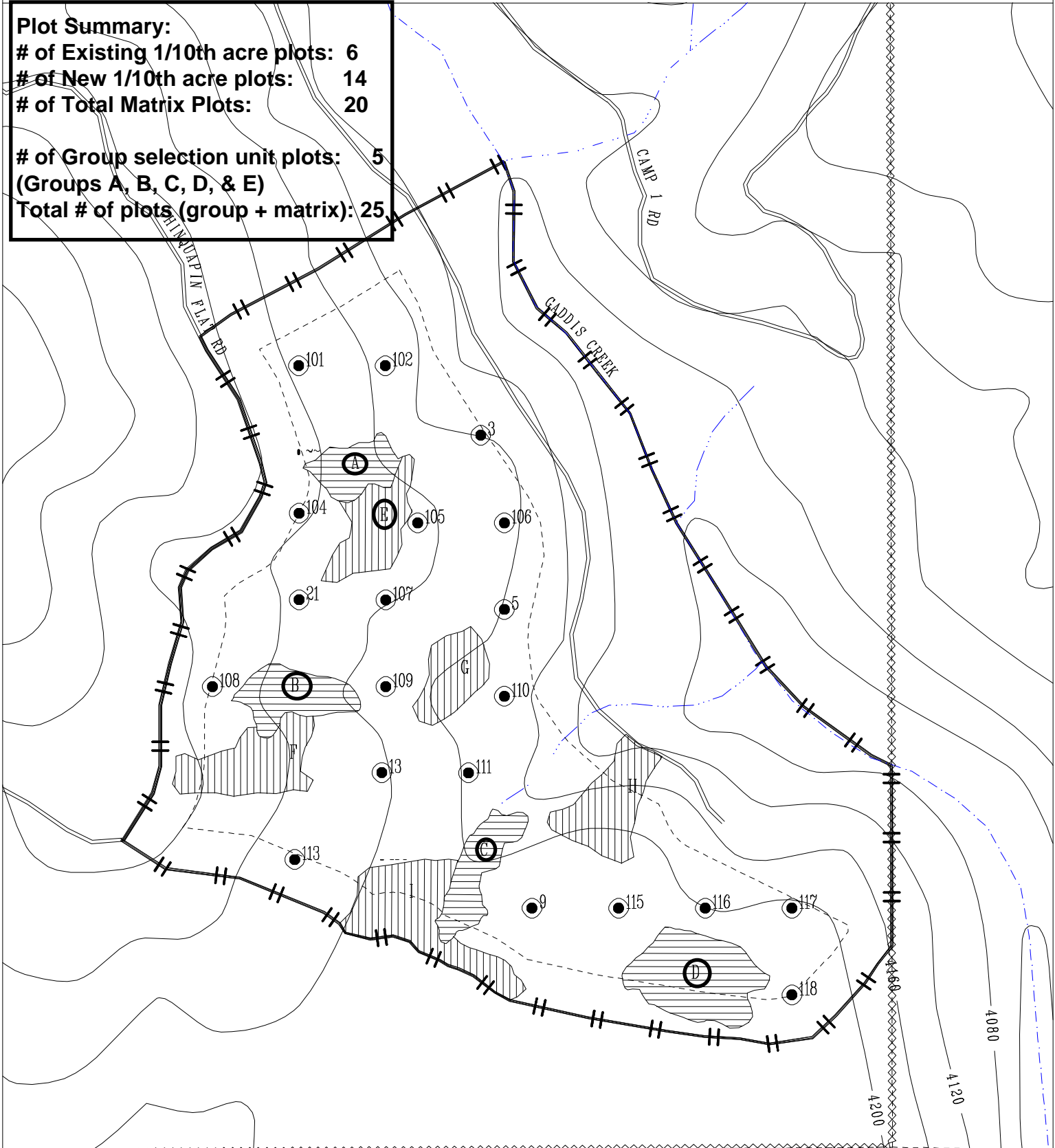
Township 12N, Range 12E
 Sec 21, Mount Diablo B&M

1 inch = 300 feet



BLODGETT FOREST - COMPARTMENT 590 U (Group Selection)

Plot Summary:
of Existing 1/10th acre plots: 6
of New 1/10th acre plots: 14
of Total Matrix Plots: 20
of Group selection unit plots: 5
(Groups A, B, C, D, & E)
Total # of plots (group + matrix): 25



- Roads:**
- Paved Permanent
 - Graveled Permanent
 - Seasonal
 - Seasonal Low Use
 - New Seasonal
 - Compartment Boundary
 - Property Boundary
 - 40 ft Contours

- Watercourses:**
- Class I
 - Class II
 - Class III
 - Class IIIIP (Potential)
 - Class IV
 - 1989 groups
 - 1996 groups

Gate

Township 12N, Range 12E
 Sec 21, Mount Diablo B&M

1 inch = 300 feet

